

ARCSERVE BUSINESS CONTINUITY CLOUD

Arcserve Business Continuity Cloud, powered by proven a unified, cloud-based management interface, enables you to prevent IT disasters in any location, safeguarding your applications and systems, at your premises and in your clouds.

Designed for hybrid multi-cloud IT infrastructures, it includes backup, disaster recovery, high availability and email archiving to meet your recovery time and point objective (RTO / RPO) and service level agreement (SLA) without the complexity of multiple vendors and interfaces.



Arcserve is the most valued solution we've had. We lean on it. We rely on it.

*Jeremy Simcoe, Director of Technical Operations,
Oxygen Technical Services*



Now, I'm only spending 10 to 15 percent of my time managing backups.

*Carl Seabold, Director of IT,
Compass Health*



Compass
Health



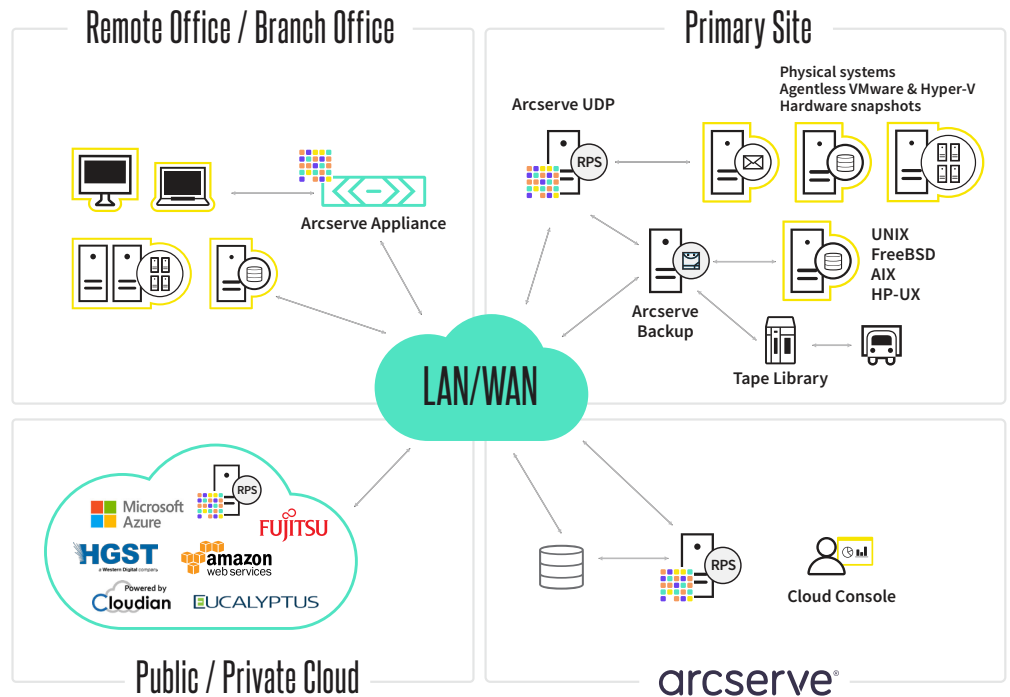
WITH ARCSERVE, YOUR BUSINESS WILL:

- **Reduce** the risks of data loss and extended downtime of your critical IT systems and applications
- **Deliver** SLAs and support every RTO and RPO to meet business expectations
- **Increase** stakeholder transparency with built-in advanced reporting and analytics
- **Protect** the transformation of your IT infrastructure with multi-cloud and cross-cloud data protection
- **Simplify** legal discovery and compliance audits, strengthening corporate and regulatory compliance
- **Cut** your total cost of ownership (TCO) and management overheads by up to 50%¹.



BACK UP YOUR DATA AND SYSTEMS

For more than 30 years, Arcserve has delivered comprehensive and robust technologies to protect the entirety of IT infrastructures:



Protected Systems

- x86: Windows, Linux, Mac
- Non-x86: UNIX, Solaris, FreeBSD, AIX, HP-UX
- Virtual: agentless for vSphere, Hyper-V and agent-based for Xen, KVM, Oracle VM Server, AHV
- Cloud: Microsoft Azure, Amazon AWS and compatible

Backup Policies

- D2D2C (disk-to-disk-to-cloud)
- D2C (disk-to-cloud)
- C2C (cloud-to-cloud)
- C2D (cloud-to-disk)
- D2D2T (disk-to-disk-to-tape)
- C2D2T (cloud-to-disk-to-tape)
- And more

Business Applications

- Microsoft Exchange, SQL Server, SharePoint
- Microsoft Office 365
- Lotus Domino, Oracle Database, Sybase, Informix, SAP HANA, SAP R/3

Backup Storage

- Arcserve Cloud: storage with global deduplication and WAN optimization
- Disk: Disk storage with global deduplication and WAN optimization
- Tape: Tape drives, tape libraries, including robotics and NDMP
- Public clouds: Amazon S3, Azure, VMware vCloud Air, Eucalyptus-Walrus, Fujitsu Cloud, Cloudian, White Cloud, CleverSafe, IIJ GIO, NEC

Recovery Options

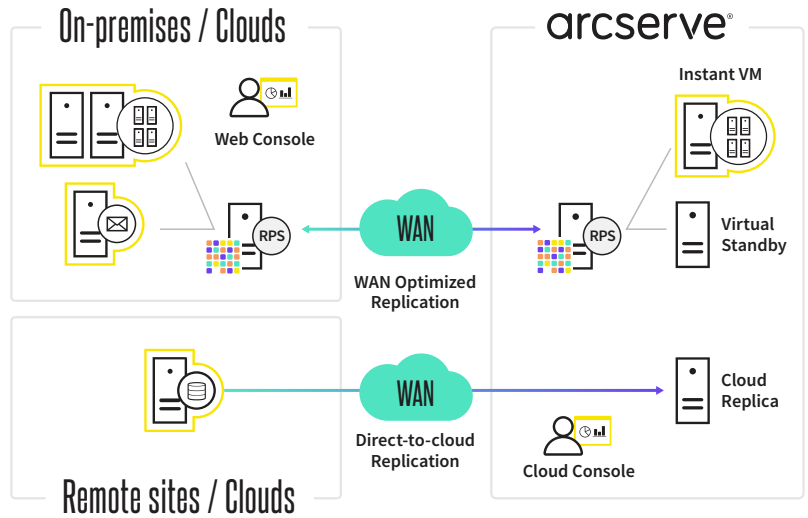
- Instant VM for on-demand recovery in minutes
- Virtual Standby for quick failover to constantly updated VM
- Bare-metal recovery to dissimilar hardware, including UEFI and Secure Boot
- Granular recovery for files, folders, emails and SharePoint documents



IMPLEMENT QUICK DISASTER RECOVERY

Diminish the risk of downtime across on-premises and cloud systems:

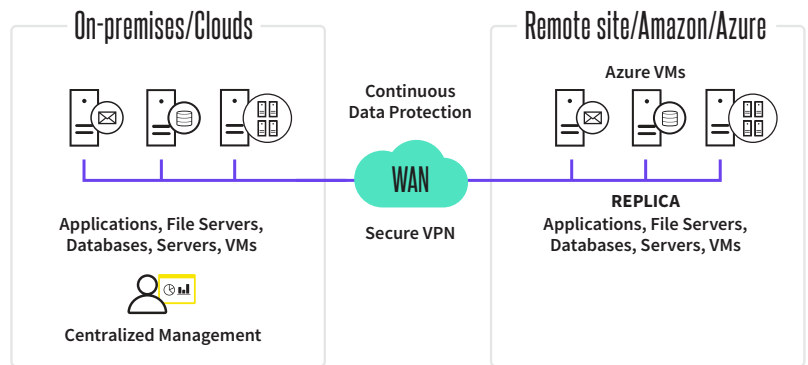
- **Maintain** a copy of business-critical systems with Virtual Standby
- **Start** production systems directly out of backup storage with Instant VM
- **Recover** secondary systems with bare-metal recovery
- **Reduce** RTOs and RPOs, while validating SLAs with built-in automatic, non-disruptive testing
- **Access** your DR infrastructure in the Arcserve Cloud from anywhere in the world



ENSURE YOUR MISSION-CRITICAL SYSTEMS ARE HIGHLY AVAILABLE

Get proven high availability for your mission-critical systems and data with automated failover for:

- **Critical Applications:** Microsoft Exchange, SQL Server, IIS, SharePoint
- **Oracle Database:** Windows, Linux, UNIX, Solaris
- **Virtual systems:** VMware vSphere, Microsoft Hyper-V
- **Physical systems:** Windows, Linux
- **File Servers:** Windows, Linux, UNIX, Solaris



We have a reliable, scalable and cost-effective solution that can support the business as it pursues its growth strategy.

Rob Parkinson, IT Director, Arrow Electronics



ARCHIVE AND MANAGE EMAILS

Get proven high availability for your mission-critical systems and data with automated failover for:

Supported Email Servers

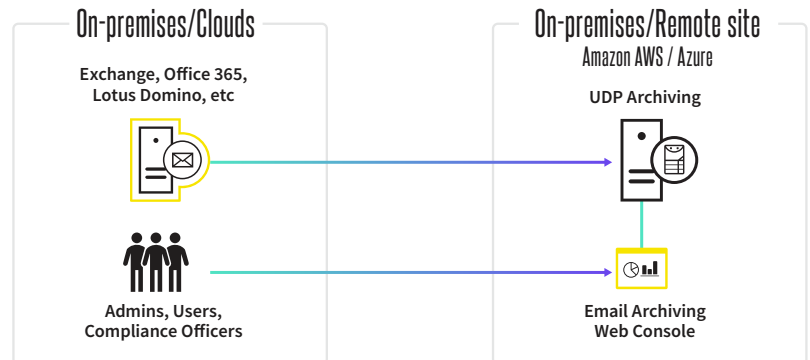
- Office 365 Exchange Online
- On-premises Microsoft Exchange
- Google G-Suite
- Lotus Domino
- Zimbra, Kerio, Sendmail, Postfix, and more

Strengthened Compliance Regulation

- Worldwide – GDPR, PCI DSS
- US – FOIA, FISMA, SOX, HIPAA, GLBA
- EU – OHSAS
- And more

Flexible User Roles

- Infrastructure Administrators
- Email Administrators
- Data Protection Officers
- Compliance Officers
- Auditors
- End-users



Using Arcserve solutions, we were able to get systems back up and running again in less than an hour.

*Kjell Flemström, Operations Manager,
Barrett AB*



ABOUT ARCSERVE

Arcserve provides exceptional solutions to protect the priceless digital assets of organizations in need of full scale, comprehensive data protection. Established in 1983, Arcserve is the world's most experienced provider of business continuity solutions that safeguard multi-generational IT infrastructures with applications and systems in any location, on premises and in the cloud. Organizations in over 150 countries around the world rely on Arcserve's highly efficient, integrated technologies and expertise to eliminate the risk of data loss and extended downtime while the reducing the cost and complexity of backing up and restoring data by up to 50 percent. Arcserve is headquartered in Minneapolis, Minnesota with locations around the world.



For more information on Arcserve, please visit [arcserve.com](https://www.arcserve.com)