

Arcserve® Unified Data Protection (UDP) Granular Restore for Microsoft® Exchange

Recovering individual files, folders, appointments, contacts and other small objects from Microsoft Exchange is one of the most difficult operations for Exchange Administrators to perform. Arcserve UDP simplifies these tasks by enabling you to restore Exchange objects such as mailboxes, folders, messages, file attachments, notes, contacts, tasks and appointments.

Our Exchange Granular Restore tool works seamlessly together with Arcserve UDP and Arcserve® Backup, and comes with an intuitive graphics-based user interface that makes searching quick and easy. Recovered items can be saved into personal storage files (.pst) to be opened with Microsoft Outlook or other compatible email clients, or alternatively, exported directly into live Exchange Server mailboxes.

Arcserve UDP Granular Restore tool for Exchange allows you to:

- Search and find mailbox contents quickly and easily for end users and legal discovery
- Export selected items to PST files or to live Exchange Server mailboxes
- Simply select a mailbox, view its contents and manually select objects for recovery
- Perform advanced searches of mailbox contents using full text of Subject, Body and Attachment, Sender (From), Recipient (To) and date range
- Restore mailbox contents, including: folders, messages and file attachments, notes, contacts, tasks and appointments

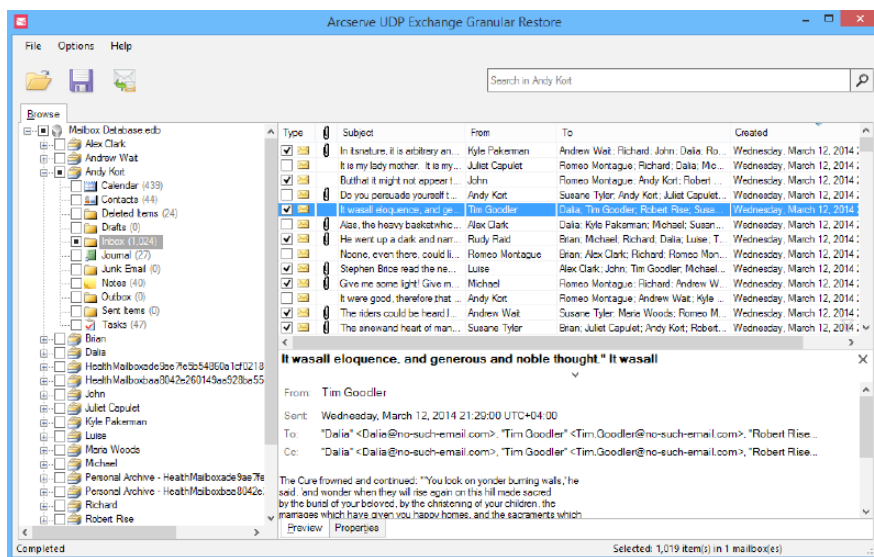


Figure 1. Exchange Granular Recovery Tool User Interface



KEY FEATURES

Name	Description
Item-level Restore	Administrators can restore all mailbox contents, including: folders, messages and file attachments, calendars, appointments, contacts, notes and tasks.
PST Export	Export selected items to offline PST files, which is helpful when fulfilling a legal discovery request. The PST file can be easily shared and opened using a standard Outlook client.
Restore to Live Exchange	Export selected items to live Exchange Server mailboxes, which is helpful for restoring items that an end user deleted by mistake.
Graphics-Based User Interface	Features an intuitive graphics-based user interface to make searching quick and easy. Simply select a mailbox (inbox, sent, deleted, custom folders, contacts, calendar, tasks, etc.), view its contents and manually select objects for recovery.
Advanced Search	Supports advanced search of mailbox contents using full text of subject, body and attachment, sender (from), recipient (to) and date range.
Reduced Backup Window	Completely eliminate the time-consuming cataloguing process that is required for native Exchange GRT.
Exchange Version Support	Support restores from Exchange 2013, Exchange 2010 and Exchange 2007 database stores.

For more information on Arcserve, please visit arcserve.com