



Laptop and Workstation Support

As your business grows your data becomes more of a strategic business asset that needs to be protected from a variety of threats. It is important that you look towards technology with a focus on products that are simple, easy to deploy and manage; enabling you to focus more on your key business priorities. You need a product that enables you to quickly and easily protect your critical business information across your company; offers quick recovery from disasters and disruptions that jeopardize your business operations.

CA ARCserve® D2D is a new disk-based backup product designed to provide the perfect combination of fast, simple and reliable protection and recovery for all of your business information. You can be confident meeting your SLAs for recovery time with the only product that has Bare Metal Restore to dissimilar hardware and Block-Level Infinite Incremental snapshots, based on CA'S I2 Technology™, in one package.

CA ARCserve D2D delivers a single snap-shot backup that allows you to restore files, volumes, applications or the entire system to any server in both physical and virtual environments. In addition, CA ARCserve D2D also lets you copy and restore backed-up data from your specified cloud storage location. This set it and forget it solution makes protecting and recovering your data a snap.

OVERVIEW

CA ARCserve D2D lets you quickly and easily protect critical business information across your company. Provides the capability to restore files/folders, volumes, applications, and perform bare metal recovery from a single backup. It also lets you deploy the software remotely to other selected servers using the CA ARCserve D2D UI.

CA ARCserve D2D now provides additional capabilities like support for Windows Desktop and Laptop operating systems, Virtual Conversion (P2V, V2P, V2V, P2P), improved search and recovery mechanisms. Also, provides additional Granular Recovery capabilities and enhanced Security/Encryption options for your data.

Lets you recover anytime, anywhere from desktops to laptops to servers, to single files/folders to databases to

BENEFITS

- Supports Windows XP, Vista, and Windows 7 Operating System Platforms.
- Protects mission-critical servers, desktops, and laptops with the same easy-to-use product, eliminates the need and expense for multiple backup solutions throughout the organization.
- Uses less storage space, performs backups faster, and puts fewer loads on your production servers.
- Provides recovery of both Microsoft SQL Server and Microsoft Exchange Server without having to perform full disaster recovery.

Install / Configure

The CA ARCserve D2D installation is straight forward and wizard-driven. Installation and configuration of CA ARCserve D2D involves the following tasks: Install the Prerequisite Components (if required), Accept the terms of the Licensing Agreement, and follow the prompts and complete all required information on the subsequent dialogs. A reboot of the computer is required before CA ARCserve D2D can be used effectively.

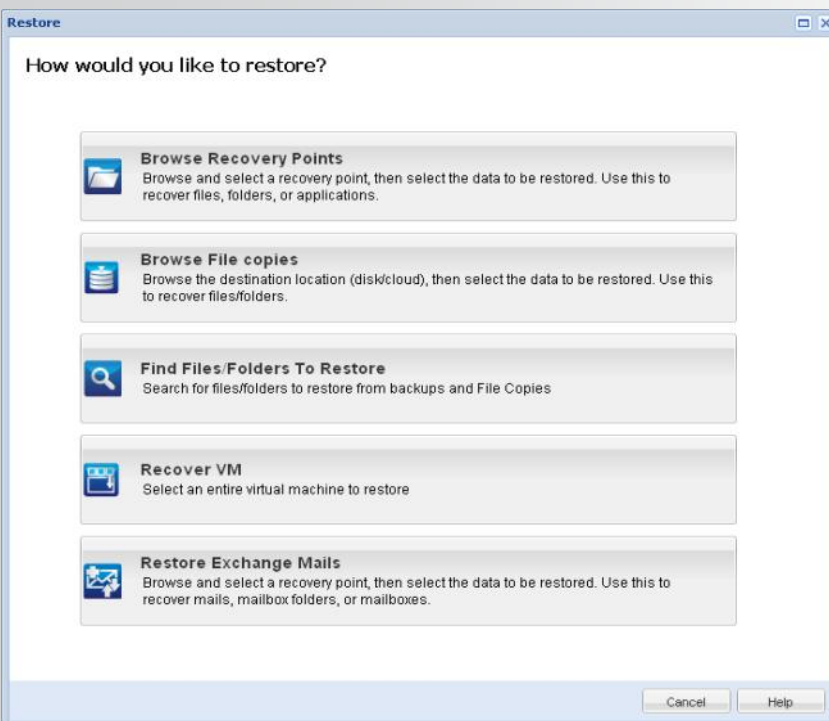
After the computer has been rebooted, either launch the CA ARCserve D2D Web UI Manager; or launch the CA ARCserve D2D Monitor Web UI. An alternative Web UI access is to open the web browser and enter `http://localhost:8014/` at the URL address line. After CA ARCserve D2D is installed on a server, you can further deploy it to other servers remotely using the CA ARCserve D2D UI without having to physically visit the remote system.

You must configure CA ARCserve D2D backup settings prior to performing your first backup. You can configure CA ARCserve D2D using the web UI Manager. Specify the destination for your backup, desired backup schedule, the number of recovery points, compression level and other settings for your backup jobs. CA ARCserve D2D lets you modify the backup settings at any time from the CA ARCserve D2D home page.

How CA ARCserve D2D Works

CA ARCserve D2D lets you perform frequent and periodic block level backups of local volumes. These backups can be stored on either an internal drive, external drive, or on a remote network share. To avoid a continuous and never-ending backup cycle, the volume being backed up cannot also be specified as the backup destination. CA ARCserve D2D provides the capability to perform full, incremental, or resynchronization type backups.

During backup (either as scheduled or manually launched), CA ARCserve D2D captures a full VSS snapshot, and then backs up only blocks that have been changed from previous successful backups. During this block-level backup process, CA ARCserve D2D not only captures the data, but also creates a catalog containing all information related to the operating system, configuration settings, necessary drivers, and so on. When required, you can then restore this backed-up image to recover your file, volume or your entire machine.



CA ARCserve D2D provides you with various tools and options that you can use to restore data. The aim of running a successful restore job is to quickly identify the data you need and to retrieve it from the appropriate backup media. Each restore job requires a source and destination.

During Restore, CA ARCserve D2D provides five methods to quickly and easily identify the data you need to restore. Shell Extensions have been added to make end user restore much easier, allowing recovery points to be mounted and browsed in windows explorer. This makes restoring data a simple drag and drop occurrence.

Frequently Asked Questions

Q: CA ARCserve D2D generate any messages to help identify problems?

A: Yes, when a problem is detected, CA ARCserve D2D generates a message to help you identify and resolve the problem. These messages are contained in the CA ARCserve D2D Activity Log, which is accessed from the View Logs option on the homepage UI. In addition, when an incorrect action is attempted, CA ARCserve D2D displays a pop-up message to help you identify and quickly resolve the problem.

Q: After I have installed CA ARCserve D2D and rebooted the computer, I cannot access the CA ARCserve D2D UI?

A: If you are not able to access the CA ARCserve D2D UI, perform the following troubleshooting procedure:

1. From the Add or Remove Programs dialog, click the Add/Remove Windows Components option to access the Windows Components Wizard screen and remove the "Internet Explorer Enhanced Security Configuration.
2. Add the host name URL to the "Trusted Sites" in Internet Explorer.
3. Adjust the security level in Internet Explorer.

Q: If the laptop or workstation is undocked, hibernated, is disconnected from the network or the USB drive being used as the backup target is removed, will these events cause issues with the scheduled jobs?

A: Due to the advanced logging logic added to address these common Laptop and Desktop events these type of events will not cause verify or full backups to be run at the next backup. The makeup jobs will run with the originally scheduled method vs. rolling back to a verify backup.

Summary

CA ARCserve D2D offers a new way to help businesses protect the critical data you rely on each day. Using innovative I2 technology™, CA ARCserve D2D provides a reliable, fast and frequent backup to help protect your data. New advancements enable CA ARCserve D2D to help ensure that your data is quickly available and recoverable following any disruptive event. Moreover, CA ARCserve D2D is a core component of the larger CA ARCserve Family - providing you with the full continuum of data protection and availability technologies to help meet all your data needs.

For more information about the CA ARCserve Family of products, please visit arcserve.com/products or test drive our products at arcserve.com/software-trials.