



# Point in Time Recovery

CA ARCserve® D2D is a disk-based backup product designed for Small and Medium Business (SMB) to provide a fast, simple and reliable way to protect and recover critical business information. Based on powerful disk-based snapshot technology and Bare-Metal Restoration capabilities, it offers a cost-effective, "set and forget" solution that helps eliminate the backup window and rapidly restore files, volumes, or the entire system to any server in both physical and virtual environments. CA ARCserve D2D includes an intuitive Point in Time Backup View feature that stores point-in-time snapshot images of your backups. This collection of recovery points allows you to locate and specify exactly which backup image you want to restore in the event of any corruption or loss of production data.

## OVERVIEW

CA ARCserve D2D lets you quickly and easily protect critical business information across your company. CA ARCserve D2D provides the capability to restore files/folders, volumes, and applications, and perform bare metal recovery from a single backup. It also lets you deploy the software remotely to other selected servers using the CA ARCserve D2D User Interface.

CA ARCserve D2D provides you with the capability to add a customized (unscheduled) recovery point so that you can roll back to this previous point in time if necessary.

## BENEFITS

- Provides a full point-in-time picture of the disk for rapid recovery of files, folders, volumes and databases.
- Provides you with the capability to copy/export recovery point information.
- Displays recovery point information on the CA ARCserve D2D home page providing a quick visual indication of the current status.
- Lets you restore the entire application or selected components, databases, instances, and so on within the application.

## Install / Configure

The CA ARCserve D2D installation is straight forward and wizard-driven. After CA ARCserve D2D is installed on a server, you can further deploy it to other servers remotely without having to physically visit the remote system. CA ARCserve D2D requires you to license the product for each server, if you intend to deploy CA ARCserve D2D to remote locations, the remote sites will also need to be licensed.

CA ARCserve D2D lets you specify the number of Recovery Points for your protected server from the CA ARCserve D2D Backup Settings, Settings tab. The CA ARCserve D2D home page displays the number of recovery points, by default the retention count is set to 10 recovery points, however you can store up to 2560 recovery points.

For more information about how to set the recovery points, see the *CA ARCserve D2D User Guide*.

## How CA ARCserve D2D Point in Time Recovery Works

CA ARCserve D2D lets you create recovery points using the Point in Time Recovery feature, enabling you to roll back to a consistent backup state in the event of data corruption or loss. You can specify the recovery point information in the backup settings window.

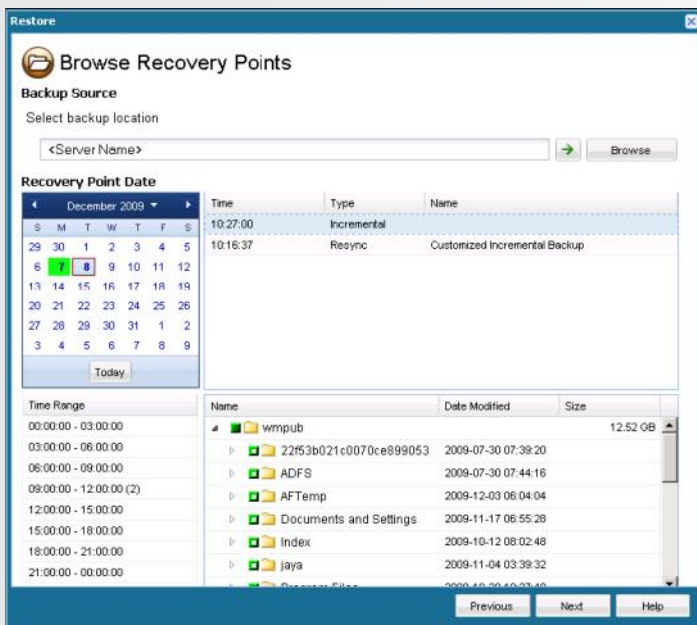
The CA ARCserve D2D home page displays the list of recovery points. If there are no saved recovery points; a red X icon is displayed indicating a potentially dangerous situation. If you have at least one recovery point, but have not reached your specified number of recovery points, a yellow icon is displayed indicating a warning of a potentially unsafe situation. If you have reached the specified number of recovery points, a green check icon is displayed.

CA ARCserve D2D provides a list of available recovery points and lets you select the recovery point you want to use to create a consolidated copy. This consolidated copy combines the blocks from the previous full and all incremental backups leading to the selected recovery point. In addition, the consolidated copy also removes any unused blocks to let you gain more efficient use of your backup resources. Each recovery point represents a point in time that a VSS snapshot image was captured and contains not only the data, but also all information related to the operating system, installed applications, configuration settings, necessary drivers, and so on.

When the specified limit of recovery points is exceeded, CA ARCserve D2D will merge the earliest (oldest) incremental child backup into the parent backup to create a new baseline image consisting of the "parent plus oldest child" blocks. This cycle of merging the oldest child backup into the parent backup will repeat for each subsequent backup, allowing you to perform incremental backups forever, while maintaining the same retention count.

## Browse Recovery Points

CA ARCserve D2D allows you to browse the available recovery points (successful backups) from a calendar view. The calendar dates that contain valid recovery points will be highlighted in green. When you select a recovery date, all the associated recovery points for that date will be displayed. You can then browse and select the backup content (including applications) to be restored.



### EXPORT RECOVERY POINTS

CA ARCserve D2D provides an option to copy/export recovery point information to store it offsite, or save the recovery points to multiple locations. When you select a recovery point to copy/export, you are not only capturing the backup blocks that were created for that specified point-in-time, but also the previous backup blocks that are needed to recreate a full and most recent backup image.

### RECOVER DATA USING RECOVERY POINTS

CA ARCserve D2D lets you restore data using either "Browse Recovery Points" or "Files/Folders to Restore" options. The Browse Recovery Points option displays the recovery points in a calendar view highlighting all the dates that contain backup source. You need to specify the required information (date, recovery point, content) and click Finish in the Restore Summary window to launch the restore process.

During restore, CA ARCserve Backup can restore the CA ARCserve D2D data onto the same location or any other location specified.

## Frequently Asked Questions

- Q:** Do we need a license to use the Point in Time Recovery feature?  
**A:** No you do not need to purchase an additional license to use this feature. The Point in Time Recovery feature is included along with the CA ARCserve D2D base product.
- Q:** Does having many recovery points impact the performance of CA ARCserve D2D?  
**A:** No, having multiple recovery points does not impact the performance. By default, CA ARCserve D2D stores 10 recovery points, you can increase/decrease the recovery points depending on your site requirements.

## Summary

With extensive data protection capabilities that work together to secure your business information, CA ARCserve D2D offers a new way to backup which drastically reduces the backup window, uses less storage, and provides a fast, flexible recovery including bare metal recovery of your protected servers. CA ARCserve D2D helps you quickly prepare for, respond to, and recover from the disruptions that threaten the integrity and reliability of your core business operations

For more information about the CA ARCserve Family of products, please visit [arcserve.com/products](http://arcserve.com/products) or test drive our products at [arcserve.com/software-trials](http://arcserve.com/software-trials).