



Application Consistent Snapshot Backups

CA ARCserve® D2D is designed to provide the perfect combination of fast, simple and reliable protection and recovery for your business information and applications. It will restore your entire system to the selected recovery point including all your data and the applications running on the protected server with a single pass restore process.

CA ARCserve D2D can specifically recover Microsoft Exchange and SQL data bases without doing a full system recovery, giving you the flexibility to decide what type of restore will be the most advantageous for your particular situation.

CA ARCserve D2D takes advantage of the Windows Volume Shadow Copy Service (VSS) to ensure that your applications are in a consistent state for backup. This is important because a consistent backup state will be faster to recover from as the application will not have to perform a consistency check before allowing users to access it.

OVERVIEW

The basic process for how CA ARCserve D2D works is simple. When a backup is initiated (either as scheduled or manually launched), CA ARCserve D2D initiates a full VSS snapshot, and then backs up only blocks that have been changed from previous successful backup. The single snapshot backup allows you to restore files, volumes, applications or the entire system to any server in both physical and virtual environments.

CA ARCserve D2D provides Application consistent backups using Microsoft Volume Shadow copy Service (VSS) for all VSS aware applications. It adds incremental block-level backup with CA's I² technology™ eliminating the need to perform additional full backups beyond the initial backup.

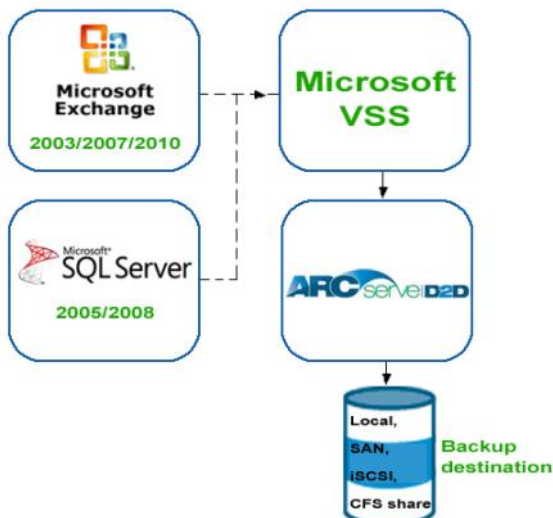
BENEFITS

- CA ARCserve D2D allows consistent recovery of VSS aware applications.
- CA ARCserve D2D provides database level restore of Microsoft Exchange and SQL data enabling the administrator to choose the most efficient recovery method.
- CA ARCserve D2D supports application aware restore for all the latest versions of Microsoft SQL and Exchange server including Exchange 2010.
- CA ARCserve D2D allows users to truncate application transaction logs on backups to help manage log size and disk space.

Application Backup

Using CA ARCserve D2D, users can backup any application which is Microsoft VSS aware. However, application level granular restore is only supported for Microsoft SQL and Exchange Server.

CA ARCserve D2D r15 supports granular recovery of Exchange 2003/2007/2010 and SQL 2005/2008 (including MSDE).



Microsoft VSS Writers will put applications into a consistent state to backup the data and ensures reliable recovery of the backed up application. During backup of application it also allows users to truncate the transaction logs. Purging of application transaction logs can be scheduled on a daily/weekly or monthly basis.

CA ARCserve D2D supports backup of Exchange 2007 CCR cluster and Exchange 2010 DAG and backup can be done from active or any standby copy of exchange DB.

For non-VSS aware applications, consistent backup can be performed using custom scripts which will stop and restart the application before and after the snapshot creation.

CA ARCserve D2D allows recovery of VSS aware applications from any backup - full, incremental or verify.

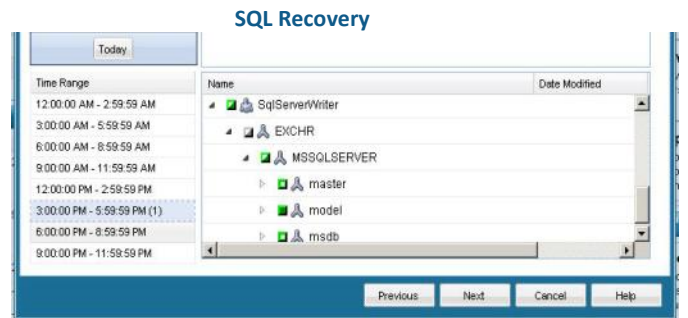
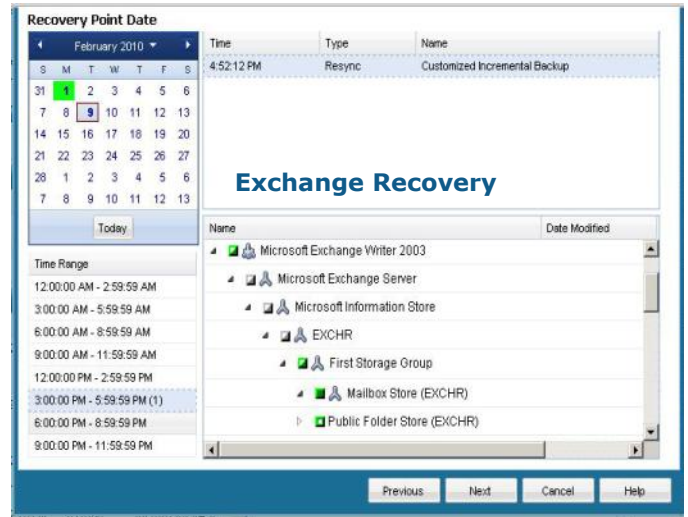
With CA ARCserve D2D you can recover the following applications at the database level without performing a full disaster recovery of the server:

- Microsoft Exchange Server
- Microsoft SQL Server

For other VSS aware applications, restore can be performed using Bare Metal Recovery (BMR) or volume level restore. Applications can be restored at a granular level. For SQL server database level restores are available and for Exchange Server it is (is Storage Group correct to use here?) mailbox database/public folder database level.

Databases can be recovered to their original location or they can be dumped to a specified folder. SQL Databases can also be recovered with a different Database name and onto a different server.

Users are allowed to recover Exchange mailbox databases to Recovery Storage Group (RSG) in Exchange 2007 or they can recover mailbox databases to the Recovery database (RDB) in Exchange 2010



Frequently Asked Questions

- Q:** Does CA ARCserve D2D support Exchange clusters?
A: CA ARCserve D2D only supports Exchange 2007 CCR cluster. It does not support Exchange MSCS clusters.
- Q:** Is compression and encryption supported in CA ARCserve D2D for backups?
A: CA ARCserve D2D supports two levels of data compression (Standard and Maximum) but it does not support data Encryption currently.
- Q:** Does CA ARCserve D2D support Exchange restore at the mailbox level?
A: No. It currently supports Exchange restore only at the (Storage Group?) database level.

Summary

CA ARCserve D2D captures all the data on your protected application server in a single pass backup. This provides application backups that are in a consistent state to enable rapid access to the application after data is restored. IT Administrator has the flexibility to select recovery of individual SQL and Exchange databases or to recover the entire system using the Bare Metal Recovery option – whichever is fastest for them based on the current state of the server.

For more information about the CA ARCserve Family of products, please visit arcserve.com/products or test drive our products at arcserve.com/software-trials.