



# SharePoint Farm High Availability

CA ARCserve® High Availability, formally known as CA XOssoft™ High Availability, gives you more control over your changing people, policies and technologies by providing full system, application and data high availability to minimize business downtime, along with continuous data protection for your data centers and remote offices – all from a single management console.

ARCserve High Availability helps you minimize business downtime and better protect your data.

## OVERVIEW

CA ARCserve High Availability supports and protects all the typical deployments of Microsoft SharePoint 2010 including Standalone, all-in-one and distributed SharePoint Server Farm.

CA ARCserve High Availability provides the ability to group scenarios that include multiple machines to protect distributed platforms such as Microsoft SharePoint, web applications, and document repositories. This provides a more coordinated approach to managing distributed applications. CA ARCserve High Availability uses the scenario wizard to automatically configure server groups to support distributed SharePoint 2010 farms.

## BENEFITS

- Automatically discovers the SharePoint farm topology and creates the required scenario for each discovered component.
- Provides overall protection and high availability status for all kinds of distributed SharePoint farm deployments.
- Lets you create distributed groups from available regular groups using Central Scenario Management.

## Install/Configure

Installation of CA ARCserve High Availability is very straightforward and wizard driven. You need to install the CA ARCserve High Availability Engine on all the Master and Replica servers taking part in Microsoft SharePoint 2010 Server Farm and install the CA ARCserve High Availability Control Service on a computer that is used to monitor and manage all scenarios.

CA ARCserve High Availability automatically discovers the Microsoft SharePoint farm topology and creates the required scenarios for each discovered component. Before running a scenario, you need to prepare the Replica server to meet the infrastructure requirements like drive letters, full path to the default system database and so on.

For more information about how to prepare the SharePoint replica server, see the CA ARCserve Replication and High Availability for Windows Microsoft SharePoint Server 2007 Operation Guide.

## How CA ARCserve High Availability Server Group Management Works

Microsoft SharePoint deployments often include application, database, and load balancing web-front-end servers, each critical to the successful operation of the application. To protect distributed deployments like this, you need multiple scenarios; a SQL scenario to protect the database server, SharePoint scenario to protect the application server, and SharePoint scenario to protect the web front end server.

CA ARCserve High Availability lets you create a single scenario group that configures the required individual scenarios needed to protect a distributed deployment, and lets you set switchover properties at the group level, so the entire farm can switch over

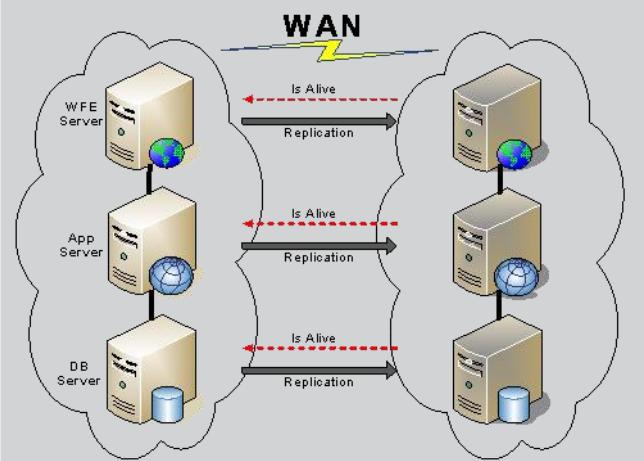
when a failure is detected anywhere in the deployment. CA ARCserve High Availability lets you centrally manage the scenarios as single logical unit as they are part of the same farm.

CA ARCserve High Availability also provides central management functionalities like Group Run/Stop, Group Switchover and Group Recover Active Server for the distributed group. You can enable the Central Management capability on a selected group to achieve whole SP farm server's switchover together, with flexible configurations like: which server/scenario is critical to trigger failover, server/scenario dependency (order of switchover) and server/scenario redundancy.

### CREATING A SHAREPOINT SERVER FARM SCENARIO GROUP

Creation of a SharePoint Server Farm Scenario Group is similar to that of creating any other scenario group. From the Manager, click the New Scenario button to launch the Scenario Creation Wizard, enter a new Scenario Group name, host name or IP address of your SharePoint web front end server. CA ARCserve High Availability discovers all the SharePoint servers in your deployment. Proceed with the scenario creation and click Finish to save the scenario group when done.

#### RUN A SCENARIO GROUP



After you create a scenario, run the scenario to start the replication process. However, before the data changes on the Master are replicated to the Replica, the Master and the Replica are synchronized. After the synchronization is complete, online replication starts automatically updating the Replica with all of the changes that occur on the Master.

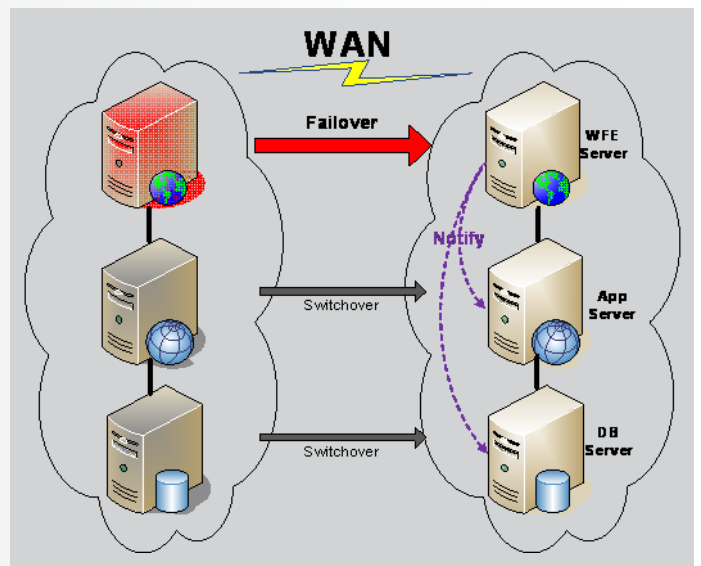
#### SWITCHOVER AND SWITCHBACK OF A SCENARIO GROUP

Once triggered, whether manually or automatically, the switchover and switchback process is fully automated.

#### GROUP FAILOVER OF SHAREPOINT SERVER DISTRIBUTED DEPLOYMENT

You can create SharePoint scenario group and configure how you want the switchover to happen based on the deployment of SharePoint servers in your environment.

For example, you have the Master Servers in the same datacenter, while SharePoint Replica servers are in another one over WAN and if some SharePoint server (i.e. WFE) is down. You could failover only that server alone, however, the whole SharePoint farm becomes split (low performance). In this case, it is suggested to use a group failover as all the SharePoint servers will be coordinated to fail over together in sequence not



## Frequently Asked Questions

**Q: Do we need any additional license to use the Server Group Configuration feature?**

A: Scenario Group Management is an optional feature and customers do not need any additional or separate license to enable it.

**Q: What is the recommended network traffic redirection method for a SharePoint server farm HA environment?**

A: You should enable redirection methods based on your environment and business needs. However, for a standalone or server farm SharePoint high availability environment it is highly recommended that the DNS redirection method be enabled.

## Summary

CA ARCserve High Availability provides application-aware high availability that minimizes business downtime and lets you quickly and easily group and manage high availability scenarios to protect the critical business information on Microsoft SharePoint farms throughout your company.

For more information about the CA ARCserve Family of products, please visit [arcserve.com/products](http://arcserve.com/products) or test drive our products at [arcserve.com/software-trials](http://arcserve.com/software-trials).