



Integration with CA ARCserve D2D

CA ARCserve Backup is a comprehensive, distributed storage management solution for distributed and multiplatform environments. The application can back up and restore data from all the machines on your network, (including machines running Windows, UNIX, and Linux) using optional client agents. CA ARCserve Backup offers control from one management console. It can support small-scale and large-scale enterprise environments comprising of one machine or many, across different platforms and organizations.

CA ARCserve D2D is a disk-based backup product designed to provide a fast, simple, and reliable way to protect and recover critical business information. CA ARCserve D2D is a light-weight solution for tracking changes on a machine at the block level and then backing up only those changed blocks in an incremental fashion. As a result, CA ARCserve D2D lets you perform frequent backups (as frequently as every 15 minutes), reducing the size of each incremental backup and providing a more up-to-date backup. CA ARCserve D2D also provides the capability to restore files/folders, volumes, and applications, and perform bare metal recovery from a single backup.

Integration of CA ARCserve D2D with CA ARCserve Backup provides easier and more efficient management of backup/recovery points created by CA ARCserve D2D. Lets you monitor CA ARCserve D2D backups from within CA ARCserve Backup, also enables you to perform quick and efficient backup of CA ARCserve D2D backup sessions to tape or other media.

OVERVIEW

Together CA ARCserve Backup and CA ARCserve D2D offer a dual layer of protection for your data. With this integration of CA ARCserve Backup with CA ARCserve D2D, you can start or install CA ARCserve D2D from the CA ARCserve Backup UI, perform raw backups of CA ARCserve D2D recovery points, and create CA ARCserve Backup sessions from CA ARCserve D2D backup data.

Lets you backup CA ARCserve D2D recovery points from CA ARCserve D2D nodes that are installed on VMware vSphere virtual machines. Also, backup CA ARCserve D2D backup sessions stored on locally attached CA ARCserve D2D nodes, remote proxy servers and remote shares to CA ARCserve backup media.

BENEFITS

- Provides access to CA ARCserve D2D servers from the CA ARCserve Backup user interface.
- One click access to CA ARCserve D2D Home Page, Backup Settings and Recovery Points.
- Lets you configure latest successful CA ARCserve D2D backup to be backed up to media by CA ARCserve Backup.
- Ability to restore files/folders/Application data from CA ARCserve D2D Sessions on CA ARCserve Backup Media.
- Enables you to store data at file/folder level granularity.

Install/Configure

Installation of CA ARCserve Backup is simple, the installation wizard is an interactive application that lets you install CA ARCserve Backup on local and remote systems with ease. Installation of CA ARCserve D2D is straight forward and wizard-driven. After CA ARCserve D2D is installed on a server, you can further deploy it to other servers remotely without having to physically visit the remote system.

You need to install CA ARCserve Backup Client Agent for Windows on the CA ARCserve D2D nodes to allow CA ARCserve Backup to communicate with CA ARCserve D2D. The CA ARCserve D2D integration is automatically installed with CA ARCserve Backup, you can access CA ARCserve D2D from CA ARCserve Backup Manager Quick Start menu, this link is active only after you install CA ARCserve D2D.

The CA ARCserve Backup SRM Manager periodically polls all the Windows Client Agent nodes to verify if CA ARCserve D2D is installed in any of the nodes, gets the details and updates the CA ARCserve Primary server with this information.

How CA ARCserve Backup works with CA ARCserve D2D

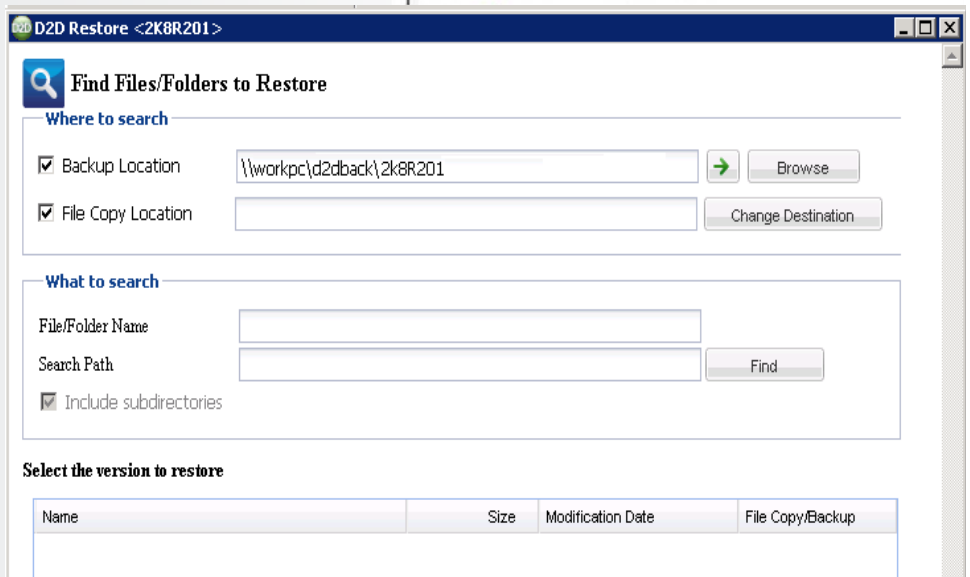
CA ARCserve Backup lets you manage CA ARCserve D2D from the Backup Manager. You can open the CA ARCserve D2D Home Page and specify CA ARCserve D2D backup options, browse CA ARCserve D2D recovery points, restore files and folders from CA ARCserve D2D recovery points.

CA ARCserve Backup lets you create backup sessions from CA ARCserve D2D backup data. CA ARCserve Backup creates the backup sessions from the latest full, incremental, or both CA ARCserve D2D backup sessions. When CA ARCserve Backup executes a backup of CA ARCserve D2D data, CA ARCserve Backup backs up the last complete CA ARCserve D2D backup session. If the last complete backup session is a full backup, CA ARCserve Backup backs up the full session. However, if the last complete backup is an incremental session, CA ARCserve Backup combines the last full backup session with the subsequent incremental backup sessions to create a full backup session.

CA ARCserve Backup backs up the last successful CA ARCserve D2D backup sessions if a CA ARCserve D2D backup job is in progress when CA ARCserve Backup starts the backup job. If a CA ARCserve D2D merge job is in progress when CA ARCserve Backup starts the backup job, CA ARCserve Backup fails the backup job and then retries the job (as a makeup job) after the CA ARCserve D2D merge job is complete.

With integration of CA ARCserve Backup with CA ARCserve D2D, you can:

- Manage CA ARCserve D2D servers from a central location.
- Add computers running CA ARCserve D2D to the CA ARCserve D2D Servers object or CA ARCserve D2D Proxy Servers object in the CA ARCserve Backup Manager UI.
- Add VMware vSphere proxy servers running CA ARCserve D2D to the CA ARCserve D2D Proxy Servers object in the CA ARCserve Backup Manager.
- Create CA ARCserve Backup sessions from CA ARCserve D2D backup data.
- Backup CA ARCserve D2D backup sessions stored locally on CA ARCserve D2D servers to CA ARCserve Backup Media. Also, Backup CA ARCserve D2D backup sessions stored remotely on proxy servers and remote shares to CA ARCserve Backup media destination.
- Recover CA ARCserve D2D backup data with granularity from CA ARCserve backup media.
- Recover Microsoft SQL databases, Microsoft Exchange Server mailboxes with granularity from CA ARCserve backup media



Frequently Asked Questions

Q: Does CA ARCserve Backup automatically discover CA ARCserve D2D nodes?

A: Yes, If the CA ARCserve backup Client Agent for Windows is installed on the CA ARCserve D2D server. The discovery is done with the CA ARCserve Backup SRM Manager probe.

Q: Can I restore a SQL table from the CA ARCserve D2D backup session?

A: No. Microsoft SQL and Microsoft Exchange restores are only allowed at the database and mailbox level for granularity.

Q: Can I browse the CA ARCserve D2D node from the CA ARCserve backup Manager UI?

A: No, browsing of the CA ARCserve D2D node is supported.

Summary

CA ARCserve Backup is a comprehensive, distributed storage management solution for distributed and multiplatform environments. CA ARCserve Backup now includes integration with CA ARCserve D2D servers, providing one step access to CA ARCserve D2D servers for backup, restore, view and reporting. CA ARCserve Backup enables you to monitor CA ARCserve D2D backups from within CA ARCserve Backup as well as enabling quick and efficient backup of CA ARCserve D2D backup sessions to tape or other media.

For more information about the CA ARCserve Family of products, please visit arcserve.com/products or test drive our products at arcserve.com/software-trials.